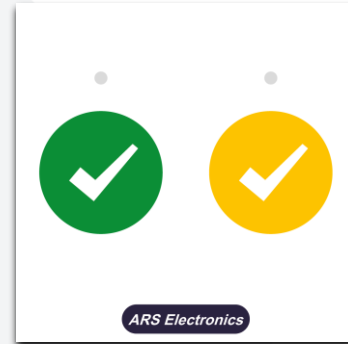


## CS10-CM19 – Nurse and Assistant presence buttons

The CS10-CM19 nurse and assistant presence buttons device can be placed next to beds or in another position in the rooms, wards or day rooms. When the green presence button is pressed nurse presence is triggered and the LED indicator is switched on with green colour to inform the nurse that the presence has been recognized by the system. The yellow button is used to inform the system that there is an assistant in the room. When this button is pressed, the LED indicator is switched on with yellow colour to inform the assistant that the presence has been recognized by the system. If any of the nurse presence button is in active mode and a nurse call is triggered, this call will be recognized by the system as an emergency call. When the nurse or the assistant finishes the support, the respective presence button must be pressed again to reset the call and to reset the presence. The presence buttons have indicator lights to help to locate the buttons in the dark.



Ref. 9801100380000

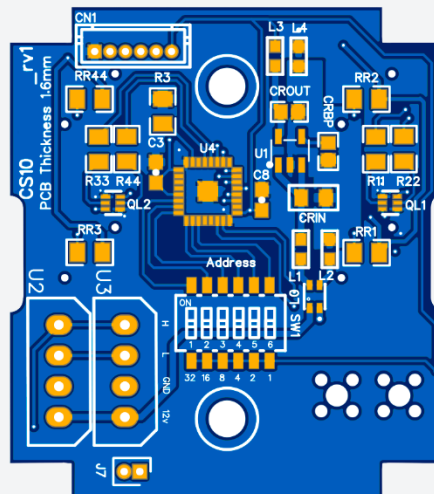
The CS10-CM19 is a standard 45x45 modular device with double capacitive buttons (green/nurse presence and yellow/assistant presence).

### CHARACTERISTICS:

<b>Electrical characteristics:</b>	
Service voltage	12 Vdc
Power consumption	0.25W @ 12V
<b>Operating frequencies</b>	
CPU	8 MHz
<b>Interfaces</b>	
CAN Bus 2 – Zone bus	Yes
<b>General characteristics</b>	
Width	45 mm
Height	45 mm
Depth	30 mm
Material (modular piece)	ABS V0
Material (faceplate)	2mm Clear Acrylic
IP degree	IP20

**CONNECTIONS:**

Connectors		
Number of terminals		8
Terminal type		Plug-in
Wire dimension		24 AWG a 12 AWG
Terminal	Pin No.	Description
U2 – CAN LS (zone bus)	1	CANH
	2	CANL
	3	GND
	4	+12V
U3 – CAN LS (zone bus)	5	CANH
	6	CANL
	7	GND
	8	+12V



CS10-CM19 – Bottom view of the PCB board.

Ref. 9801100380000