

CS10-PM01 – WC pull-cord module

The CS10-PM01 device is a WC pull-cord call module that can be placed inside the sanitary facilities to be used by the patient in case of need of help or, if a health professional is present, to be used to make an emergency call. Calls executed by this button are considered WC help request calls. When this pull-cord call module is triggered, the LED indicator is switched on with a red colour to inform the patient that the call has been recognized by the system. If the cord is pulled when there is a nurse in the room, who has pressed the nurse presence button, the call made using the WC pull-cord module will be interpreted by the system as an emergency call. This device has IP44 and can be placed inside the sanitary facilities near to bathing areas not under jets of water. The CS10-PM01 is protected against water splashed from all directions allowing limited water ingress without losing operability.



Ref. 9801100350000

This device has two versions, the CS10-PM01 and the CS10-PM01W. The CS10-PM01 device is a basic version to be used in normal environments while the CS10-PM01W device is WC pull-cord module version with moisture PCB protection for areas with higher relative humidity such as sanitary installations with bathing areas.

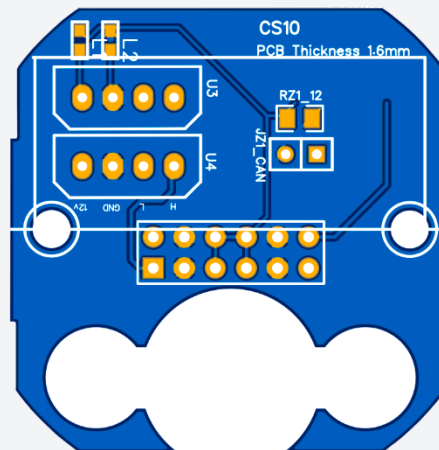
The CS10-PM01 is a wall mounted device with dimensions 80x80mm with opal LED diffusers.

CHARACTERISTICS:

Electrical characteristics:	
Service voltage	12 Vdc
Power consumption	0.25W @ 12V
Operating frequencies	
CPU	8 MHz
Interfaces	
CAN Bus 2 – Zone bus	Yes
General characteristics	
Width	80 mm
Height	80 mm
Depth	37.5 mm
Material	ABS UL-94-HB
IP degree	IP44

CONNECTIONS:

Connectors		
Number of terminals		8
Terminal type		Plug-in
Wire dimension		24 AWG a 12 AWG
Terminal	Pin No.	Description
U3 – CAN LS (zone bus)	1	CANH
	2	CANL
	3	GND
	4	+12V
U4 – CAN LS (zone bus)	5	CANH
	6	CANL
	7	GND
	8	+12V



CS10-PM01 – Bottom view of the PCB board.

Ref. 9801100350000 for moisture environments