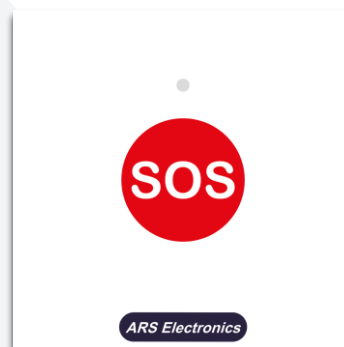


CS10-CM18W – WC call button

The CS10-CM18 device is a WC call button that can be placed inside the sanitary facilities to be used by the patient in case of need of help or, if a health professional is present, to be used to make an emergency call. This call button is optional as it performs the same function of the pull-cord device (CS10-PM01). Calls executed by this button are considered WC help request calls. When this button is pressed, the LED indicator is switched on with a red colour to inform the patient that the call has been recognized by the system. If this button is pressed when there is a nurse in the room, who has pressed the nurse presence button, the call made using the WC call button will be interpreted by the system as an emergency call. The call button has a finder light to help the patient to locate the button in the dark.



Ref. 9801100340000

This device has two versions, the CS10-CM18 and the CS10-CM18W. The CS10-CM18 device is a basic version to be used in normal environments and while the CS10-CM18W device is WC pull button version with moisture PCB protection for areas with higher relative humidity such as sanitary installations with bathing areas.

The CS10-CM18 is a standard 45x45 modular device with a single red colour capacitive call button.

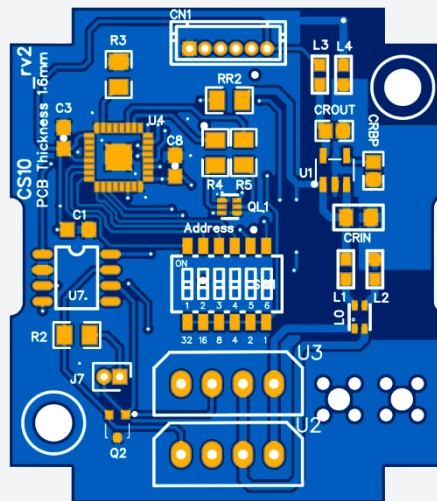
CHARACTERISTICS:

Electrical characteristics:	
Service voltage	12 Vdc
Power consumption	0.25W @ 12V
Operating frequencies	
CPU	8 MHz
Interfaces	
CAN Bus 2 – Zone bus	Yes
General characteristics	
Width	45 mm
Height	45 mm
Depth	30 mm
Material (modular piece)	ABS V0
Material (faceplate)	2mm Clear Acrylic
IP degree	IP20

CS10-CM18/CS10-CM18W

CONNECTIONS:

Connectors		
Number of terminals		8
Terminal type		Plug-in
Wire dimension		24 AWG a 12 AWG
Terminal	Pin No.	Description
U2 – CAN LS (zone bus)	1	CANH
	2	CANL
	3	GND
	4	+12V
U3 – CAN LS (zone bus)	5	CANH
	6	CANL
	7	GND
	8	+12V



CS10-CM18 – Bottom view of the PCB board.

Ref. 9801100340000 for moisture environments