

CS10-LS03 – Optical signaling slave module

The CS10-LS02 device is an optical signaling beacon that can be installed on the door of the sanitary installation that is part of the room under surveillance. According to the VDE0834 standard this device is not necessary, however, for better understanding of the location of the call trigger, the use of a WC beacon is recommended. When a WC call is triggered this slave beacon will produce a static red light and will be muted.

This device should not be used when the purpose is to monitor a sanitary facility that is not part of a room. If this is the case, the lighting beacon to be used must be the CS10-LS01 device.

The CS10-LS03 has a triangular prism shape with dimensions 80x82x50mm with an opal diffuser.



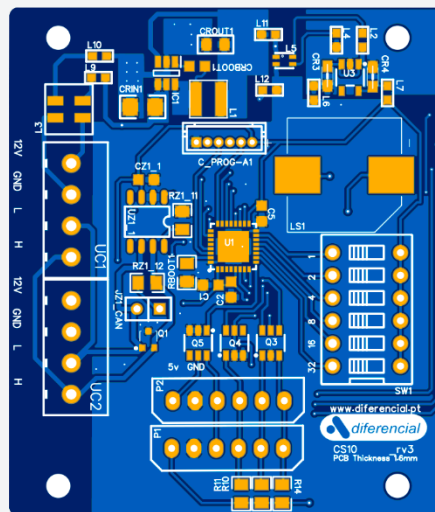
Ref. 9801100270000

CHARACTERISTICS:

Electrical characteristics:	
Service voltage	12 Vdc
Power consumption	0.5W @ 12V
Operating frequencies	
CPU	8 MHz
Interfaces	
CAN Bus 2 – Zone bus	Yes
General characteristics	
Width	80 mm
Height	82 mm
Depth	50 mm
Material	ABS UL-94-HB
IP degree	IP20

CONNECTIONS:

Connectors		
Number of terminals		8
Terminal type		Plug-in
Wire dimension		24 AWG a 12 AWG
Terminal	Pin No.	Description
UC1 – CAN LS (zone bus)	1	+12V
	2	GND
	3	CANL
	4	CANH
UC2 – CAN LS (zone bus)	5	+12V
	6	GND
	7	CANL
	8	CANH



CS10-LS03 – Bottom view of the PCB board.