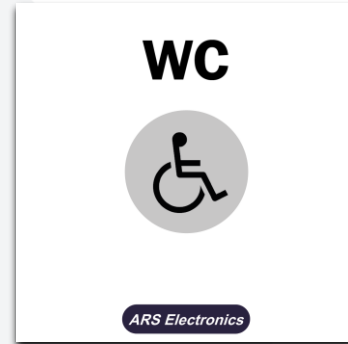


CS10-LS02 – WC Optical signaling slave module (flat version)

The CS10-LS02 device is an optical signaling beacon that can be installed on the door of the sanitary installation that is part of the room under surveillance. According to the VDE0834 standard this device is not necessary, however, for better understanding of the location of the call trigger, the use of a WC beacon is recommended. When a WC call is triggered this slave beacon will produce a static red light and will be muted.

This device should not be used when the purpose is to monitor a sanitary facility that is not part of a room. If this is the case, the lighting beacon to be used must be the CS10-LS01 device.

The CS10-LS01 is a standard 45x45 modular device.



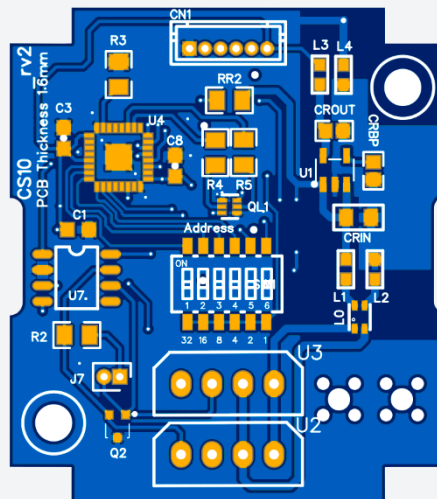
Ref. 9801100260000

CHARACTERISTICS:

Electrical characteristics:	
Service voltage	12 Vdc
Power consumption	0.25W @ 12V
Operating frequencies	
CPU	8 MHz
Interfaces	
CAN Bus 2 – Zone bus	Yes
Type 1 jack interface	Yes
General characteristics	
Width	45 mm
Height	45 mm
Depth	30 mm
Material (modular piece)	ABS V0
Material (faceplate)	2mm Clear Acrylic
IP degree	IP20

CONNECTIONS:

Connectors		
Number of terminals		8
Terminal type		Plug-in
Wire dimension		24 AWG a 12 AWG
Terminal	Pin No.	Description
U2 – CAN LS (zone bus) and PS	1	CANH
	2	CANL
	3	GND
	4	+12V
U3 – CAN LS (zone bus) and PS	5	CANH
	6	CANL
	7	GND
	8	+12V



CS10-LS02 – Bottom view of the PCB board.

Ref. 9801100260000