

## CS10-LS01 – Optical and acoustic signaling module

The CS10-LS01 device is an optical and acoustic signaling beacon that must be installed over the door of the room where patients are under surveillance. This device must also be installed outside the sanitary facilities under surveillance. When a call is recognized by the CS system different colours and sounds are produced by the CS10-LS01:

- When an alarm call is triggered, the beacon quickly will flash blue and produce a very short period pulsed beeper (300ms on and 300ms off).
- For emergency calls, the device will flash red and produce a short period pulsed beeper (1s on and 1s off).
- For help request calls, the beacon will turn static red and produce a slow beeper (1s on and 10s off).
- In the case of service request calls, the beacon will turn static yellow and produce a slow beeper (1s on and 10s off).
- For non-priority third-party system calls, the beacon will turn static purple and produce a slow beeper (1s on and 10s off).



Ref. 9801100250000

When attendance has been made by the healthcare staff, the beacon will mute and produce a light with the color corresponding to the respective healthcare professional (blue for doctor, green for nurse and yellow for assistant).

The CS10-LS01 has a triangular prism shape with dimensions 80x82x50mm with an opal diffuser.

### CHARACTERISTICS:

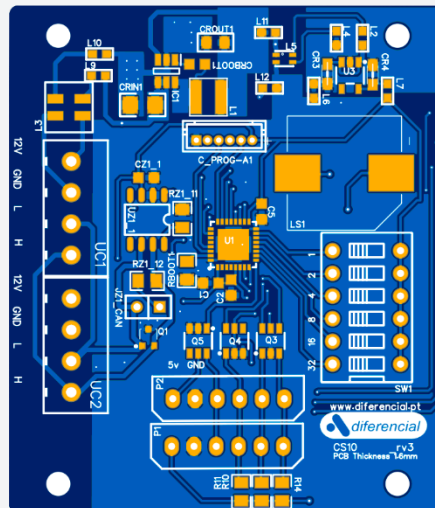
<b>Electrical characteristics:</b>	
Service voltage	12 Vdc
Power consumption	0.5W @ 12V
<b>Operating frequencies</b>	
CPU	8 MHz
<b>Interfaces</b>	
CAN Bus 2 – Zone bus	Yes
<b>General characteristics</b>	
Width	80 mm
Height	82 mm
Depth	50 mm
Material (modular piece)	ABS UL-94-HB

IP degree IP20

**CS10-LS01**

**CONNECTIONS:**

Connectors		
Number of terminals		8
Terminal type		Plug-in
Wire dimension		24 AWG a 12 AWG
Terminal	Pin No.	Description
UC1 – CAN LS (zone bus)	1	+12V
	2	GND
	3	CANL
	4	CANH
UC2 – CAN LS (zone bus)	5	+12V
	6	GND
	7	CANL
	8	CANH



CS10-LS01 – Bottom view of the PCB board.

Ref. 9801100250000