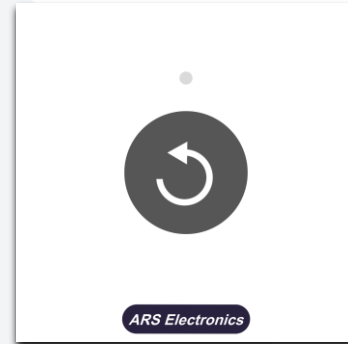


CS10-RM01 – Reset button

The CS10-RM01 device is an optional reset button that can be placed in some rooms to reset low-level priority calls such as service calls, third-party calls and WC calls. When this button is pressed, the LED indicator is switched on with a white colour to inform the healthcare staff that the reset has been recognized by the system. The call button has a finder light to help the healthcare professional to locate the button in the dark.

The CS10-RM01 is a standard 45x45 modular device with a single grey colour capacitive button.



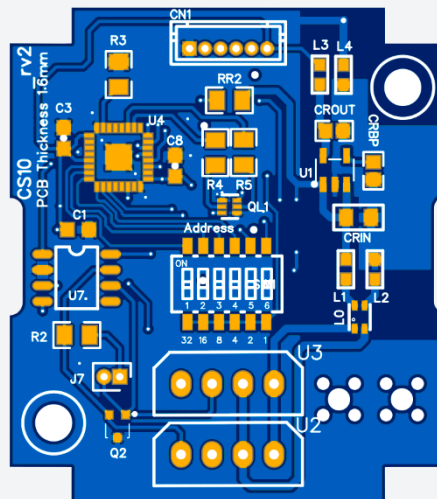
Ref. 9801100230000

CHARACTERISTICS:

Electrical characteristics:	
Service voltage	12 Vdc
Power consumption	0.25W @ 12V
Operating frequencies	
CPU	8 MHz
Interfaces	
CAN Bus 2 – Zone bus	Yes
General characteristics	
Width	45 mm
Height	45 mm
Depth	30 mm
Material (modular piece)	ABS V0
Material (faceplate)	2mm Clear Acrylic
IP degree	IP20

CONNECTIONS:

Connectors		
Number of terminals		8
Terminal type		Plug-in
Wire dimension		24 AWG a 12 AWG
Terminal	Pin No.	Description
U2 – CAN LS (zone bus)	1	CANH
	2	CANL
	3	GND
	4	+12V
U3 – CAN LS (zone bus)	5	CANH
	6	CANL
	7	GND
	8	+12V



CS10-RM01 – Bottom view of the PCB board.

Ref. 9801100230000