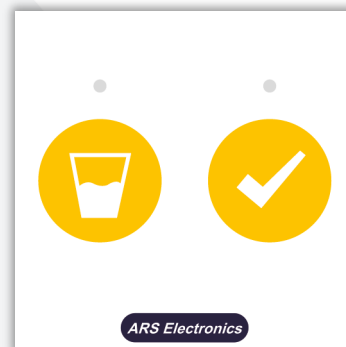


CS10-CM10 – Assistant call and presence buttons

The CS10-CM10 assistant call and presence buttons device can be placed next to beds or in another position in the rooms, wards or day rooms. When the call button is pressed an assistant call is triggered and the LED indicator is switched on with yellow colour to inform the patient that the call has been recognized by the system. The yellow presence button is used to inform the system that there is an assistant in the room. When this button is pressed, the LED indicator is switched on with yellow colour to inform the assistant that the presence has been recognized by the system. When the assistant finishes the support, the assistant must press the presence button again to reset the call and to reset the presence. The call buttons have indicator lights to help to locate the buttons in the dark.



Ref. 9801100150000

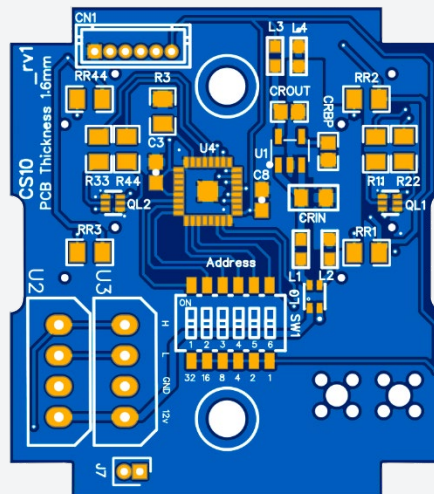
The CS10-CM10 is a standard 45x45 modular device with double capacitive call buttons (red/nurse call, green/nurse presence).

CHARACTERISTICS:

Electrical characteristics:	
Service voltage	12 Vdc
Power consumption	0.25W @ 12V
Operating frequencies	
CPU	8 MHz
Interfaces	
CAN Bus 2 – Zone bus	Yes
General characteristics	
Width	45 mm
Height	45 mm
Depth	30 mm
Material (modular piece)	ABS V0
Material (faceplate)	2mm Clear Acrylic
IP degree	IP20

CONNECTIONS:

Connectors		
Number of terminals		8
Terminal type		Plug-in
Wire dimension		24 AWG a 12 AWG
Terminal	Pin No.	Description
U2 – CAN LS (zone bus)	1	CANH
	2	CANL
	3	GND
	4	+12V
U3 – CAN LS (zone bus)	5	CANH
	6	CANL
	7	GND
	8	+12V



CS10-CM10 – Bottom view of the PCB board.

Ref. 9801100150000