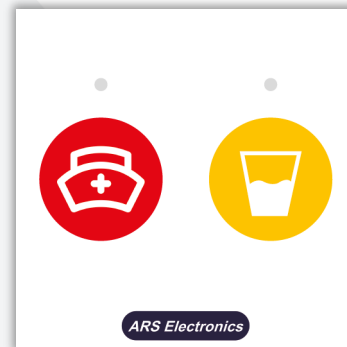


## CS10-CM08 – Nurse call and assistant call buttons

The CS10-CM08 nurse and assistant call button device can be placed next to beds or in another position in the rooms, wards or day rooms. Calls performed by these buttons are considered nurse calls or assistant calls, depending on the button pressed. When the nurse call button is pressed, the LED indicator is switched on with red colour to inform the patient that the call has been recognized by the system. Similarly, when the assistant call button is activated, the LED indicator is switched on with yellow colour. If the nurse call button is pressed when there is a nurse in a room, who has pressed the nurse presence button, the call made using the nurse call button will be interpreted by the system as an emergency call. The call buttons have finder lights to help the patient to locate the buttons in the dark.



Ref. 9801100130000

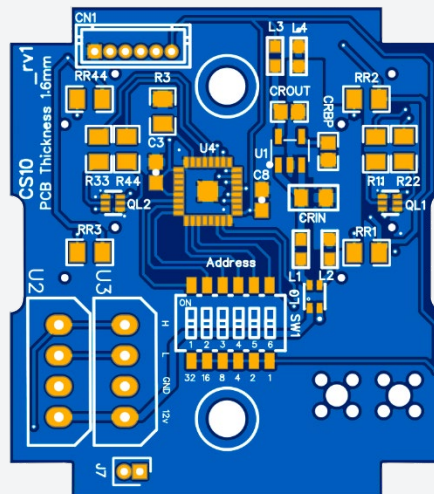
The CS10-CM08 is a standard 45x45 modular device with double capacitive call buttons (red/nurse call, yellow/assistant call).

### CHARACTERISTICS:

Electrical characteristics:	
Service voltage	12 Vdc
Power consumption	0.25W @ 12V
Operating frequencies	
CPU	8 MHz
Interfaces	
CAN Bus 2 – Zone bus	Yes
General characteristics	
Width	45 mm
Height	45 mm
Depth	30 mm
Material (modular piece)	ABS V0
Material (faceplate)	2mm Clear Acrylic
IP degree	IP20

**CONNECTIONS:**

Connectors		
Number of terminals		8
Terminal type		Plug-in
Wire dimension		24 AWG a 12 AWG
Terminal	Pin No.	Description
U2 – CAN LS (zone bus)	1	CANH
	2	CANL
	3	GND
	4	+12V
U3 – CAN LS (zone bus)	5	CANH
	6	CANL
	7	GND
	8	+12V



CS10-CM08 – Bottom view of the PCB board.

Ref. 9801100130000