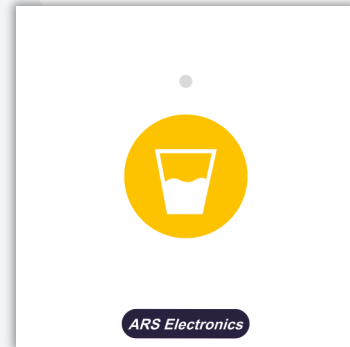


## CS10-CM06 – Assistant call button

The assistant call button CS10-CM06 can be placed next to beds or in another position in the rooms. Calls executed by this button are considered non-priority service request calls. When this button is pressed, the LED indicator is switched on with a yellow colour to inform the patient that the call has been recognized by the system. The call button has a finder light to help the patient to locate the button in the dark.

The CS10-CM06 is a standard 45x45 modular device with a single yellow colour capacitive call button.



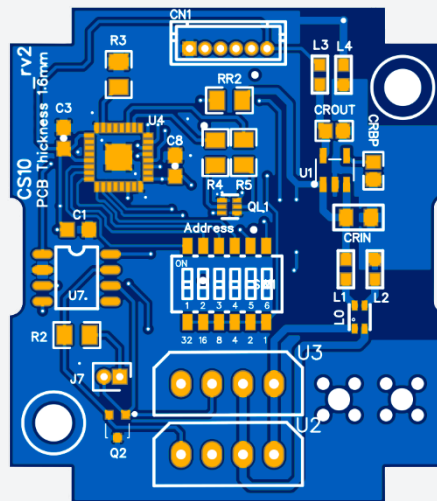
Ref. 9801100110000

### CHARACTERISTICS:

<b>Electrical characteristics:</b>	
Service voltage	12 Vdc
Power consumption	0.25W @ 12V
<b>Operating frequencies</b>	
CPU	8 MHz
<b>Interfaces</b>	
CAN Bus 2 – Zone bus	Yes
<b>General characteristics</b>	
Width	45 mm
Height	45 mm
Depth	30 mm
Material (modular piece)	ABS V0
Material (faceplate)	2mm Clear Acrylic
IP degree	IP20

**CONNECTIONS:**

Connectors		
Number of terminals		8
Terminal type		Plug-in
Wire dimension		24 AWG a 12 AWG
Terminal	Pin No.	Description
U2 – CAN LS (zone bus)	1	CANH
	2	CANL
	3	GND
	4	+12V
U3 – CAN LS (zone bus)	5	CANH
	6	CANL
	7	GND
	8	+12V



CS10-CM06 – Bottom view of the PCB board.

Ref. 9801100110000