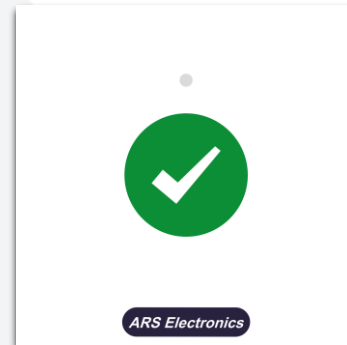


CS10-CM02 – Nurse presence button

The nurse presence button CS10-CM02 can be placed next to beds or in another position in rooms, day rooms, support bathrooms, etc. This button is used to inform the system that there is a nurse in the room. When this button is pressed, the LED indicator is switched on with green colour to inform the nurse that the presence has been recognized by the system. If this button is in active mode and a nurse call is triggered, this call will be recognized by the system as an emergency call. When the nurse finishes the support, the nurse must press the presence button again to reset the call and to reset the presence. The call button has an indicator light to help the nurse locate the button in the dark.



Ref. 9801100070000

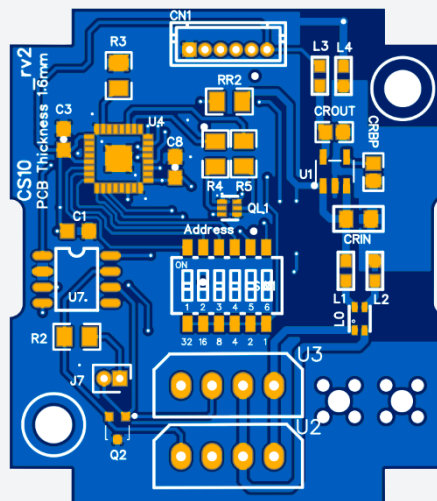
The CS10-CM02 is a standard 45x45 modular device with a single green colour capacitive presence button.

CHARACTERISTICS:

Electrical characteristics:	
Service voltage	12 Vdc
Power consumption	0.25W @ 12V
Operating frequencies	
CPU	8 MHz
Interfaces	
CAN Bus 2 – Zone bus	Yes
General characteristics	
Width	45 mm
Height	45 mm
Depth	30 mm
Material (modular piece)	ABS V0
Material (faceplate)	2mm Clear Acrylic
IP degree	IP20

CONNECTIONS:

Connectors		
Number of terminals		8
Terminal type		Plug-in
Wire dimension		24 AWG a 12 AWG
Terminal	Pin No.	Description
U2 – CAN LS (zone bus)	1	CANH
	2	CANL
	3	GND
	4	+12V
U3 – CAN LS (zone bus)	5	CANH
	6	CANL
	7	GND
	8	+12V



CS10-CM02 – Bottom view of the PCB board.

Ref. 9801100070000