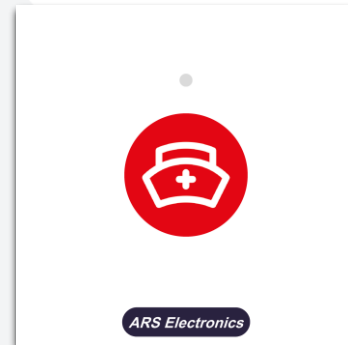


CS10-CM01 – Nurse call button

The nurse call button CS10-CM01 can be placed next to beds or in another position in the rooms, day rooms, support toilets, etc. Calls executed by this button are considered help request calls. When this button is pressed, the LED indicator is switched on with a red colour to inform the patient that the call has been recognized by the system. If this button is pressed when there is a nurse in a room, who has pressed the nurse presence button, the call made using the nurse call button will be interpreted by the system as an emergency call. The call button has a finder light to help the patient to locate the button in the dark.

The CS10-CM01 is a standard 45x45 modular device with a single red colour capacitive call button.



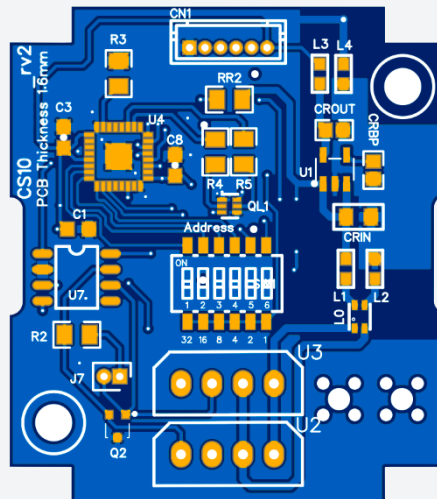
Ref. 9801100060000

CHARACTERISTICS:

Electrical characteristics:	
Service voltage	12 Vdc
Power consumption	0.25W @ 12V
Operating frequencies	
CPU	8 MHz
Interfaces	
CAN Bus 2 – Zone bus	Yes
General characteristics	
Width	45 mm
Height	45 mm
Depth	30 mm
Material (modular piece)	ABS V0
Material (faceplate)	2mm Clear Acrylic
IP degree	IP20

CONNECTIONS:

Connectors		
Number of terminals		8
Terminal type		Plug-in
Wire dimension		24 AWG a 12 AWG
Terminal	Pin No.	Description
U2 – CAN LS (zone bus)	1	CANH
	2	CANL
	3	GND
	4	+12V
U3 – CAN LS (zone bus)	5	CANH
	6	CANL
	7	GND
	8	+12V



CS10-CM01 – Bottom view of the PCB board.

Ref. 9801100060000