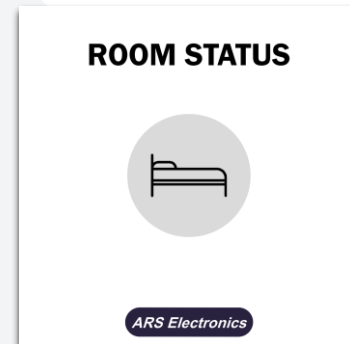


CS10-RD01 – Room status device

The Room Device CS10-RD01 is an optional device that can be installed inside the room in front of the beds in order to provide visual and acoustic feedback to the patient. This device replicates all the calls which were made in the room. The device has two lighting zones that help to calm patients, a zone dedicated to the operability of the call system with the indication "ON" and another zone with call information with indication "CALL". The LEDs have the following functions:

- LED system status – White/System OK;
- LED call status "CALL" - Blue/Doctor call, Red/Nurse call, Yellow/Assistant call.

The CS10-RD01 is a standard 45x45 modular device.



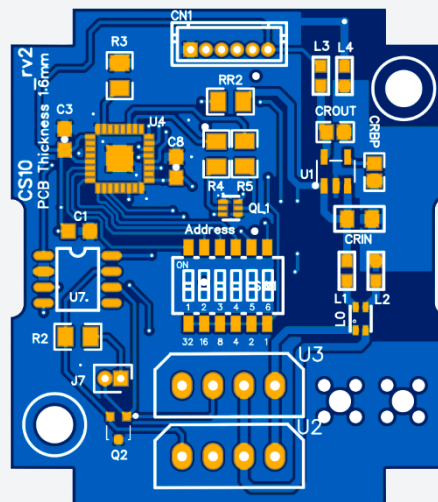
Ref. 9801100050002

CHARACTERISTICS:

Electrical characteristics:	
Service voltage	12 Vdc
Power consumption	0.25W @ 12V
Operating frequencies	
CPU	8 MHz
Interfaces	
CAN Bus 2 – Zone bus	Yes
General characteristics	
Width	45 mm
Height	45 mm
Depth	30 mm
Material (modular piece)	ABS V0
Material (faceplate)	2mm Clear Acrylic
IP degree	IP20

CONNECTIONS:

Connectors		
Number of terminals		8
Terminal type		Plug-in
Wire dimension		24 AWG a 12 AWG
Terminal	Pin No.	Description
U2 – CAN LS (zone bus)	1	CANH
	2	CANL
	3	GND
	4	+12V
U3 – CAN LS (zone bus)	5	CANH
	6	CANL
	7	GND
	8	+12V



CS10-RD01 – Bottom view of the PCB board.

Ref. 98011000500XX - use XX=01 for PT; 02 for EN_UK; 03 for FR; 04 for DE; 05 for PT_BR; 06 for EN_USA; 07 for SP; 08 for IT