

CS10-HC01 - HUB device

The CS-HC01 device is a HUB that routes between interface devices and the Control Panel, bridging the Backbone Bus and the Zone Bus. The CS10 system can address up to 127 HUB devices.

The HUB device can monitor up to 64 interface devices such as call buttons, presence buttons, reset buttons, third-party system interfaces and door beacons. The HUB device also has the function of monitoring the status of each of the interfaces it has connected to it and sending its status to the Control Panel.

The CS10-HC01 is housed in a surface-mounted box with dimensions 124x84x58mm.

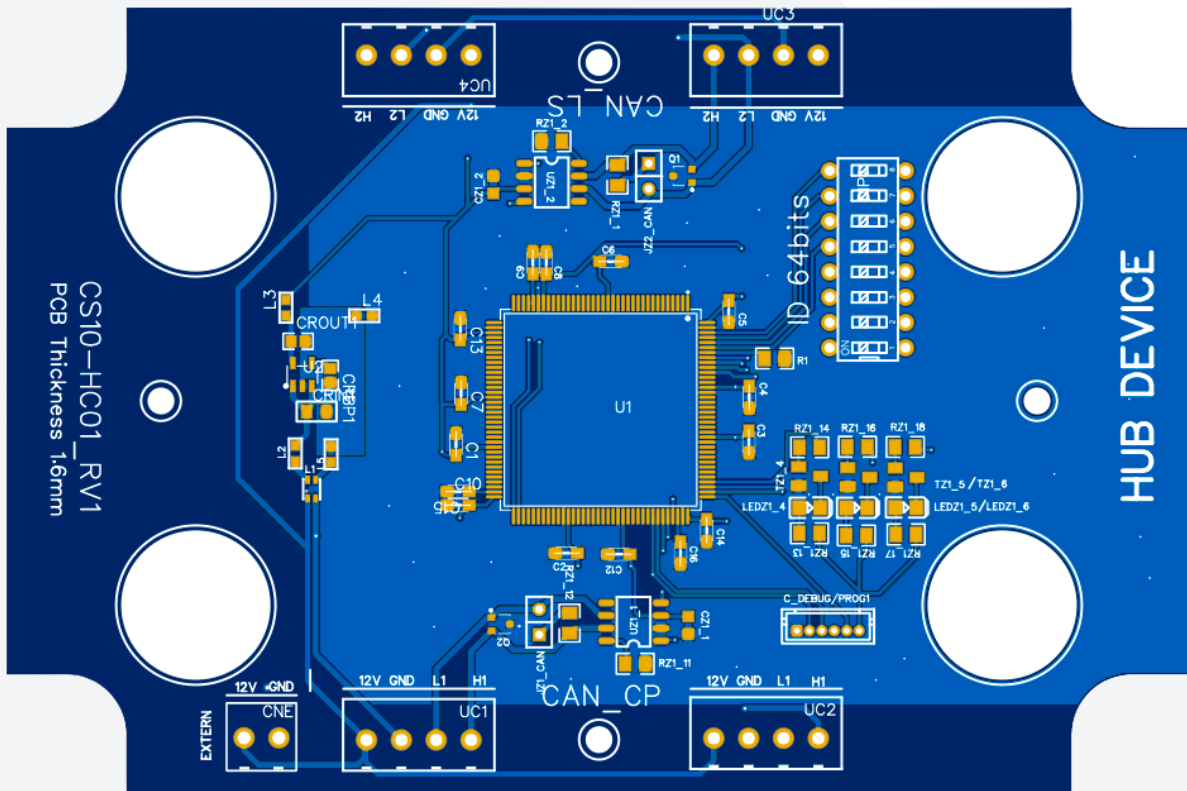


CHARACTERISTICS:

Electrical characteristics:	
Service voltage	12 – 15 Vdc
Power consumption	2.5W @ 12V
Operating frequencies	
CPU	16 MHz
Interfaces	
CAN Bus 1 – Backbone bus	Yes
CAN Bus 2 – Zone bus	Yes
General characteristics	
Width	124 mm
Height	84 mm
Depth	58 mm
Colour	Grey RAL 7035
Material	Technopolymer GWPLAST 75
IP degree	IP56
Mechanical resistance	IK08

CONNECTIONS:

Connectors		
Number of terminals		18
Terminal type		Plug-in
Wire dimension		24 AWG a 12 AWG
Terminal	Pin No.	Description
UC1 – CAN CP (backbone bus)	1	+12V
	2	GND
	3	CANL1
	4	CANH1
UC2 – CAN CP (backbone bus)	5	+12V
	6	GND
	7	CANL1
	8	CANH1
UC3 – CAN LS (zone bus)	9	+12V
	10	GND
	11	CANL2
	12	CANH2
UC4 – CAN LS (zone bus)	13	+12V
	14	GND
	15	CANL2
	16	CANH2
POWER	17	+12V
	18	GND



CS10-HC01 - Front view of the PCB board.

Ref. 9801100040000