

CS10-RP01 – Repeater panel

The CS10-RP01 is a Repeater Panel which replicates calls from specific zones. Each Repeater Panel can monitor more than one zone and there may be more than one repeater panel in a single zone. The Repeater Panel is interconnected at the backbone bus level. The CS10 Nurse Call System can address up to 127 Repeater Panels.

The CS10-RP01 is a wall-mounted version of the CS10 Control Panel with dimensions 250x155x54mm.



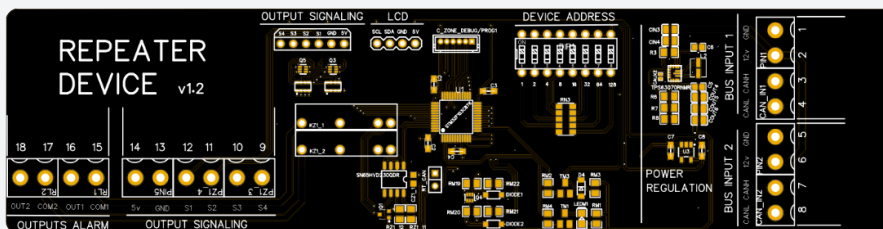
Ref. 9801100030002

CHARACTERISTICS:

Electrical characteristics:	
Service voltage	12 – 15 Vdc
Power consumption	0.8W @ 12V
Operating frequencies	
CPU	16 MHz
Interfaces	
CAN	Yes
Optical acoustic interface	Yes
Alarm output relays	Yes
General characteristics	
Width	250 mm
Height	155 mm
Depth	54 mm
Material	ASA+PC-FR (UL 94 V-0)
IP protection class	IP40
Standards	RoHS compliant, REACH compliant

CONNECTIONS:

Connectors		
Number of terminals		18
Terminal type		Plug-in
Wire dimension		24 AWG a 12 AWG
Terminal	Pin No.	Description
BUS INPUT 1	1	GND
	2	+12V
	3	CANH
	4	CANL
BUS INPUT 2	5	GND
	6	+12V
	7	CANH
	8	CANL
OUTPUT SIGNALING	9	S4
	10	S3
	11	S2
	12	S1
	13	GND
OUTPUTS ALARM	14	+5V
	15	COM1
	16	OUT1
	17	COM 2
	18	OUT 2



CS10-RP01 - Bottom view of the PCB board.

Ref. 98011000300XX - use XX=01 for PT; 02 for EN_UK; 03 for FR; 04 for DE; 05 for PT_BR; 06 for EN_USA; 07 for SP; 08 for IT