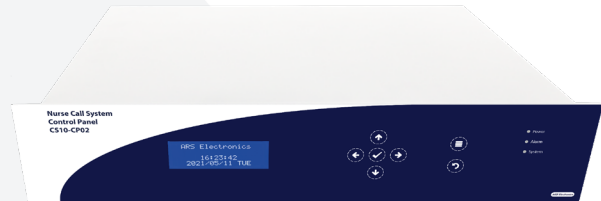


CS10-CP02 - Control panel (Rack version)

The CS10-CP02 control panel addresses up to 255 elements on the backbone bus that interconnects up to 127 HUB concentrators (CS10-HB01), up to 127 repeater panels (CS10-RP01) and a reserved address for expansion. Each HUB addresses up to 64 devices which make possible to monitors up to 8128 interface devices



Ref. 9801100020002

The control panel has a TCP/IP interface allowing remote access to monitor calls through the CS10-MS01 supervision software or to perform maintenance operations remotely

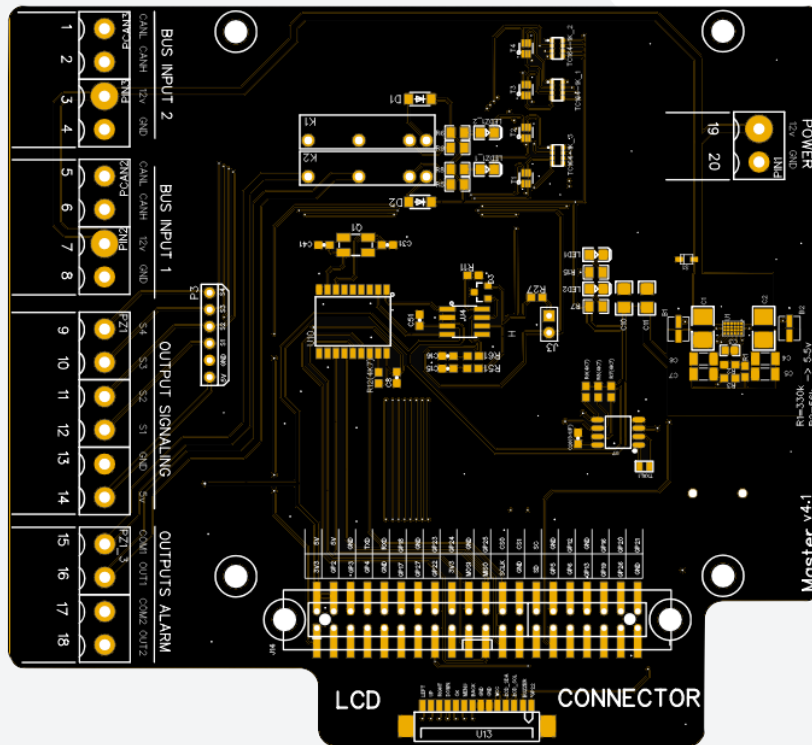
The CS10-CP02 is a rack-mounted version of the CS10 Control Panel with dimensions 482.6x88.5x250mm.

CHARACTERISTICS:

Electrical characteristics:	
Service voltage	12 – 15 Vdc
Power consumption	2.5W @ 12V
Operating frequencies	
CPU	1.2GHz
CAN BUS Controller	16MHz
Interfaces	
Ethernet	Yes
CAN	Yes
Optical acoustic interface	Yes
Alarm output relays	Yes
General characteristics	
Width	482.6 mm
Height	88.5 mm
Depth	250 mm
Material	Steel
IP protection class	IP40
Standards	RoHS compliant, REACH compliant

CONNECTIONS:

Connectors		
Number of terminals		20
Terminal type		Plug-in
Wire dimension		24 AWG a 12 AWG
Terminal	Pin No.	Description
BUS INPUT 2	1	CANL
	2	CANH
	3	+12V
	4	GND
BUS INPUT 1	5	CANL
	6	CANH
	7	+12V
	8	GND
OUTPUT SIGNALING	9	S1
	10	S2
	11	S3
	12	S4
	13	GND
	14	+5V
OUTPUTS ALARM	15	COM1
	16	OUT1
	17	COM 2
	18	OUT 2
POWER	19	+12V
	20	GND



CS10-CP02 - Bottom view of the PCB board.

Ref. 98011000200XX - use XX=01 for PT; 02 for EN_UK; 03 for FR; 04 for DE; 05 for PT_BR; 06 for EN_USA; 07 for SP; 08 for IT